

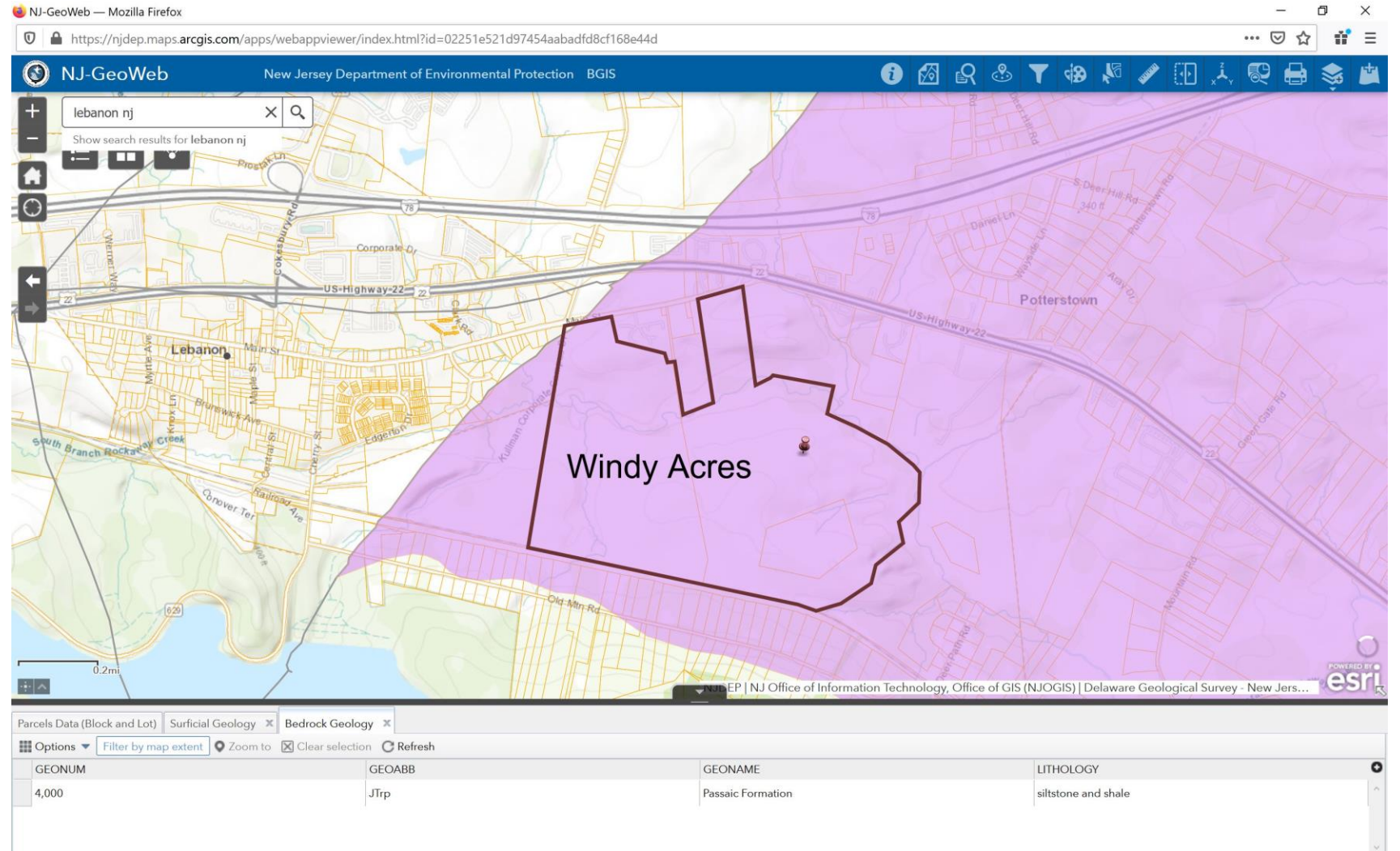
Geology of Windy Acres

Windy acres bedrock geology consists of siltstones and shale. Surficial geology consists of a weathered shale, mudstone, and sandstone with alluvium along the North Branch of the Raritan River. Soils mainly consist of silt loams.

Windy Acres elevations range from elevation 175 at the eastern area, to elevation 290 at its highest centrally located point near drive leading to the homestead. The watershed and groundwater recharge are very important to the flora and fauna on Windy Acres. We are very grateful that Windy Acres is being preserved and enjoyed by the residents of Clinton Township.

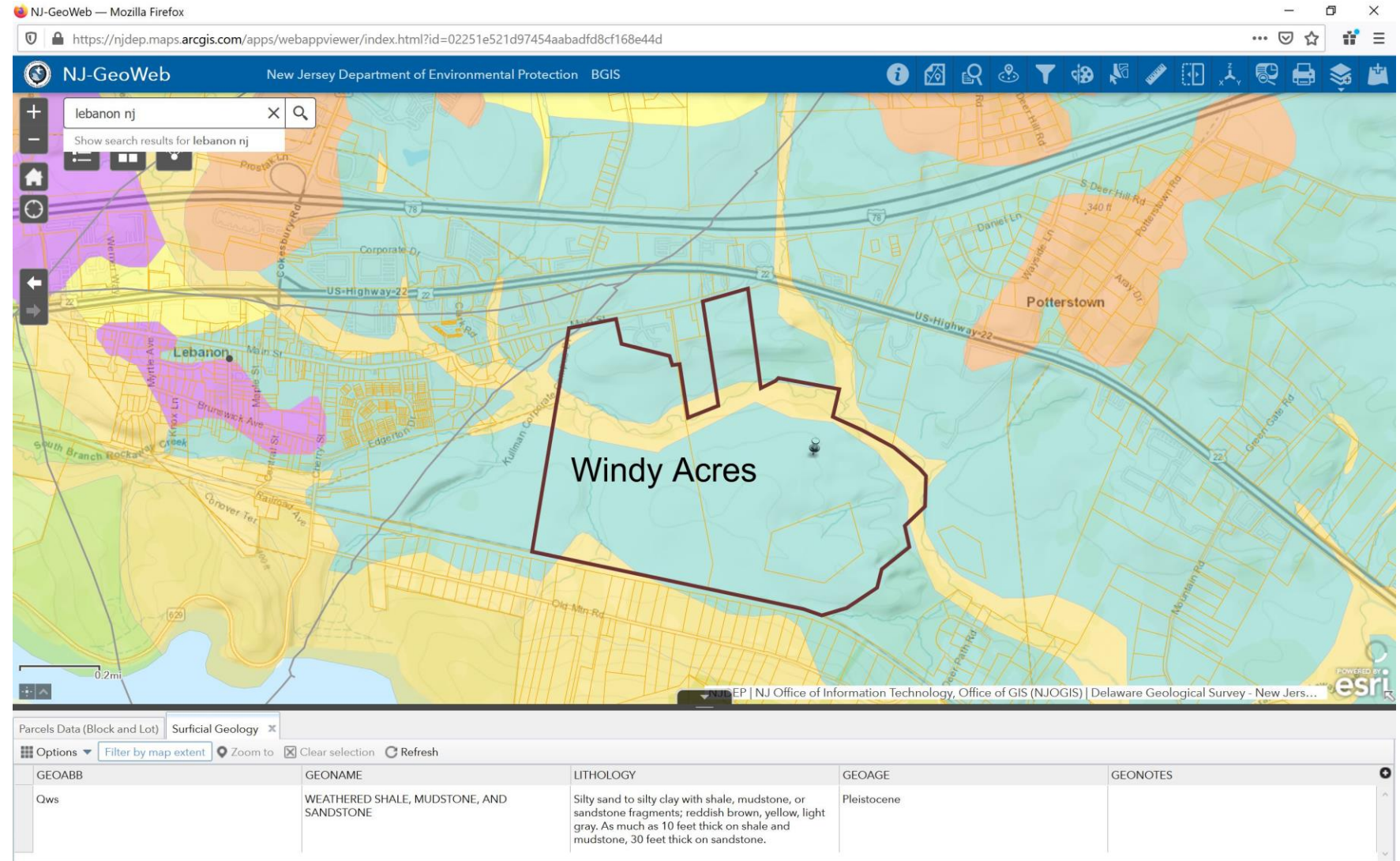
Bedrock Geology

Underlying geology consists of the Passaic formation (JTrp) siltstone and shale. The bedrock can be directly observed in the northeastern section of the site in the river bedrock and river banks.



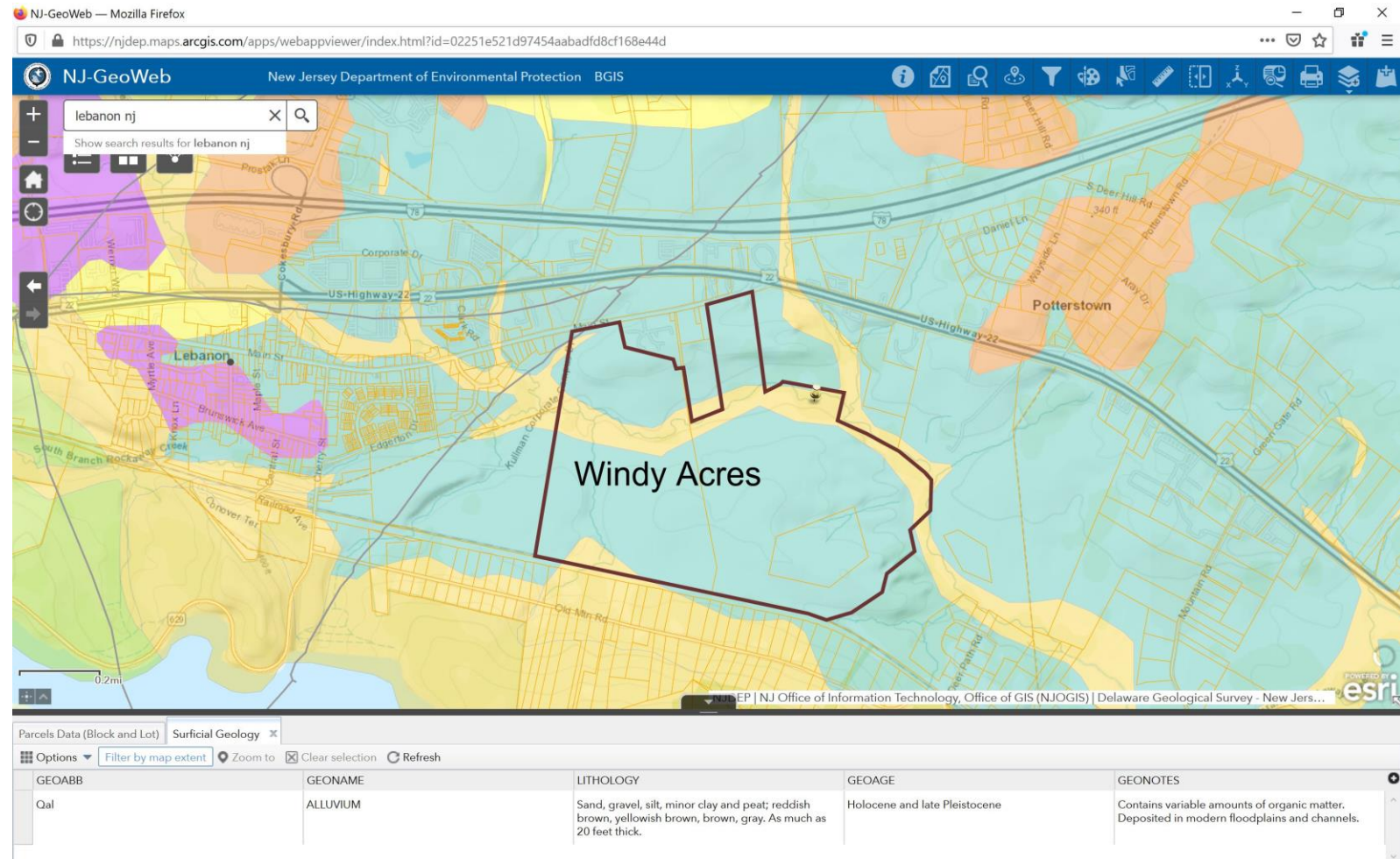
Surficial Geology

Surficial geology on the majority of the site is a Pleistocene weathered shale, mudstone, and sandstone (Qws).



Surficial Geology

Along the North Branch of the Raritan River, surficial geology consists of Holocene and Pleistocene Alluvium sand, gravel and silt (Qal).



Soils of Windy Acres



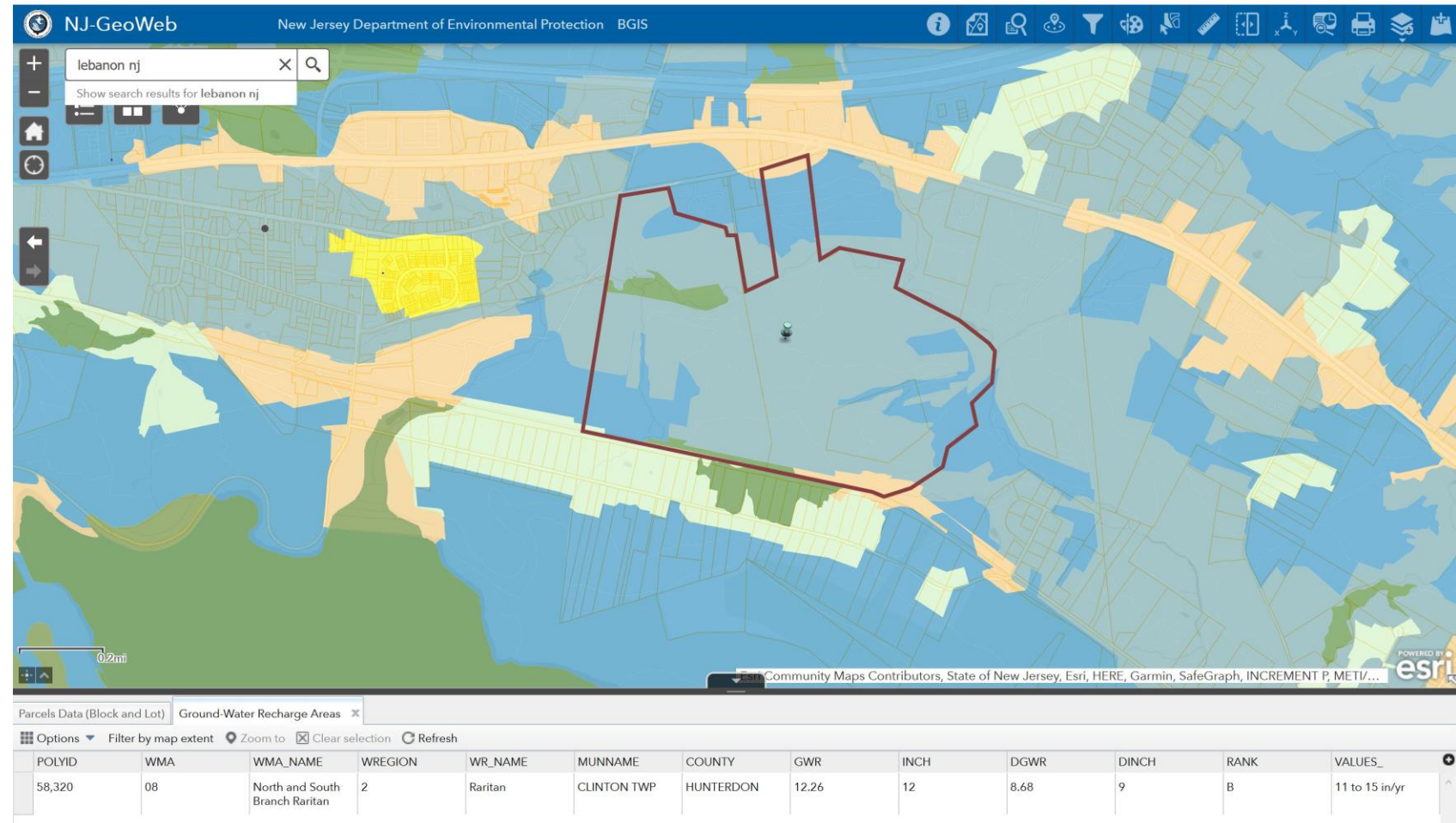
Hunterdon County, New Jersey (NJ019)

Map Unit Symbol	Map Unit Name	Acres in AOI	Percent of AOI
AbrB	Abbottstown silt loam, 2 to 6 percent slopes	76.9	15.90%
BoyAt	Bowmansville silt loam, 0 to 2 percent slopes, frequently flooded	2.9	0.60%
CanBb	Califon gravelly loam, 0 to 8 percent slopes, very stony	0.5	0.10%
KkoC	Klinesville channery loam, 6 to 12 percent slopes	36.6	7.50%
KkoD	Klinesville channery loam, 12 to 18 percent slopes	3.4	0.70%
LbtB	Lansdowne silt loam, 2 to 6 percent slopes	13.7	2.80%
LemC2	Lehigh silt loam, 6 to 12 percent slopes, eroded	20.7	4.30%
NehCb	Neshaminy silt loam, 6 to 12 percent slopes, very stony	40.1	8.30%
NehDb	Neshaminy silt loam, 12 to 18 percent slopes, very stony	0.4	0.10%
NehEb	Neshaminy silt loam, 18 to 35 percent slopes, very stony	0	0.00%
NemCb	Neshaminy-Mount Lucas silt loams, 6 to 12 percent slopes, very stony	21.9	4.50%
NotB	Norton loam, 2 to 6 percent slopes	6	1.20%
NotC2	Norton loam, 6 to 12 percent slopes, eroded	5.4	1.10%
PeoB	Penn channery silt loam, 2 to 6 percent slopes	48.2	9.90%
PeoC2	Penn channery silt loam, 6 to 12 percent slopes, eroded	72.1	14.90%
PeoD	Penn channery silt loam, 12 to 18 percent slopes	27.7	5.70%
RarAr	Raritan silt loam, 0 to 3 percent slopes, rarely flooded	0.6	0.10%
ROPF	Rough broken land, shale	49.2	10.10%
RorAt	Rowland silt loam, 0 to 2 percent slopes, frequently flooded	56	11.50%
UdrB	Udorthents, refuse substratum, 0 to 8 percent slopes	3	0.60%
Totals for Area of Interest		485.3	100.00%

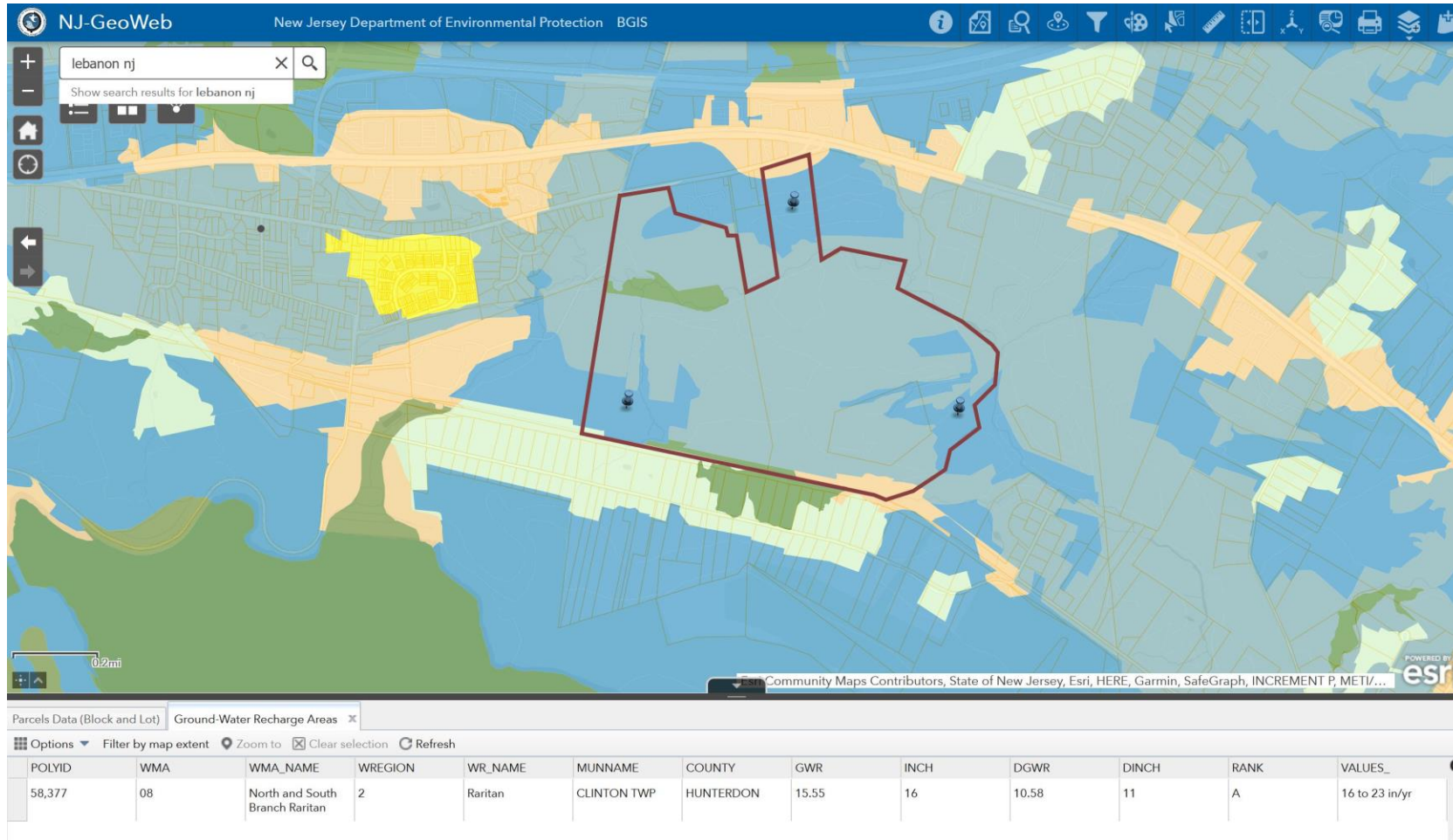
Windy Acres Watershed

Windy Acres resides in the Upper Raritan River watershed management area (WM8).

Windy Acres is part of the headwaters of the North Branch Raritan River which is part of the overall 1100 acre Raritan River basin that ultimately flow east to Raritan Bay to the east. The site consists of three recharge classifications, varying from 11 to 23 inches per year, with a small section of wetlands, observed on the next three slides



Windy Acres Watershed



Windy Acres Watershed

