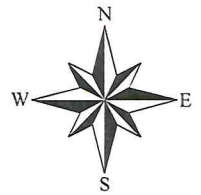


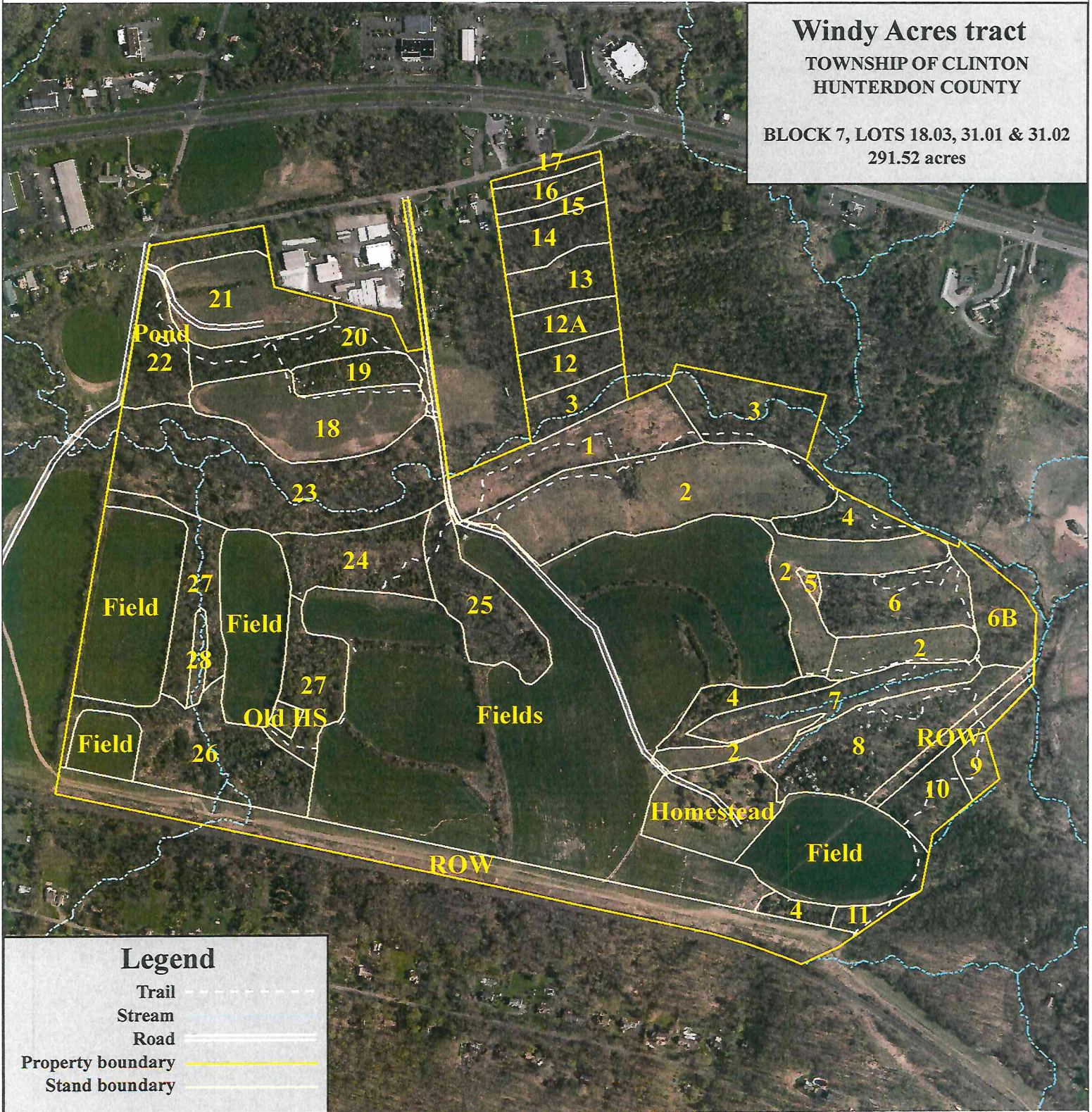
# PROPERTY MAP



## Windy Acres tract

TOWNSHIP OF CLINTON  
HUNTERDON COUNTY

BLOCK 7, LOTS 18.03, 31.01 & 31.02  
291.52 acres



### Legend

- Trail (dashed line)
- Stream (blue dashed line)
- Road (solid line)
- Property boundary (yellow line)
- Stand boundary (white line)

1 inch = 700 feet

This map was developed using NJDEP GIS digital data, but this secondary product has not been verified by NJDEP and is not state-authorized.



## Windy Acres Preserve Vegetation Cover Types

<u>Stand #</u>	<u>Age</u>	<u>Cover Type</u>	<u>Management?</u>	<u>Comments</u>
1	~13 years	Mixed Pin Oak-Ash-Cedar	Control Invasives	
2	~5 to 6 years	Mixed Cedar-B Walnut-Ash	Control Invasives & Plant	
3	60 to 80+years	B.Walnut-Cedar-Ash-Honey Locust	Cut fox grape and other vines that are damaging good trees	
4	25+ years	Cedar-Ash-Calgary Pear	Control Calgary Pear	
5	n/a	Cattails		
6	80 to 100 years	Walnut-Ash-Pin Oak	Cut vines that are damaging trees	
7	80 to 90 years	Ash-Walnut-Shagbark Hickory	Control brush and vines	
8	20 to 30 years	B. Walnut-Ash-Pin Oak	Control Calgary Pear	
9	90 to 100+ years	Upland Oak-S.Maple	Control invasives	
10	50 to 60 years	Cedar-Ash-Pin Oak	Control invasive and vines	
11	40 to 100+ years	Pin Oak-Ash-Cedar-S. Maple	Control invasives and vines	
11A	2 -3+ years	Oak-Maple Plantings	Maintain site	
12	50 to 60 years	Ash-Cedar-Elm		
12A	60 to 70+ years	White Ash		
13	40 to 50 years	Cedar-Ash		
14	40 to 50 years	Black Locust-Cedar		
15	25 to 50 years	Semi Open Mixed Hardwoods-Cedar		
16	25 to 50 years	Cedar		
17	25 to 50 years	Pin Oak-Cedar-Sugar Maple		
18	2+ years	Open Field	Delayed Mowing-Pollinator Meadow?	
19	25 to 30 years	Cedar-Pin Oak	Control invasives and vines	
20	40 to 50+ years	Red Maple-Cedar-Pin Oak		
21	2 -3 years	Old field-Disturbed		
22				
23				
24	10 to 15+ years	Young Cedar	Plant and and Invasive control	
25	50 to 60+ years	White Ash-Cedar-Pin Oak		
26	30 to 50 years	Cedar-Pin Oak-Elm-Ash(old homesite)		
27	50 to 70 years	Ash-Elm-Walnut-Boxelder-B.Locust		